

The Great Grid Upgrade

Sea Link

Sea Link

Volume 2: Plans and Drawings

Document 2.8.3: Statutory and Non Statutory Sites of Nature Conservation Geological and Landscape Importance - Offshore

Planning Inspectorate Reference: EN020026

Version: A

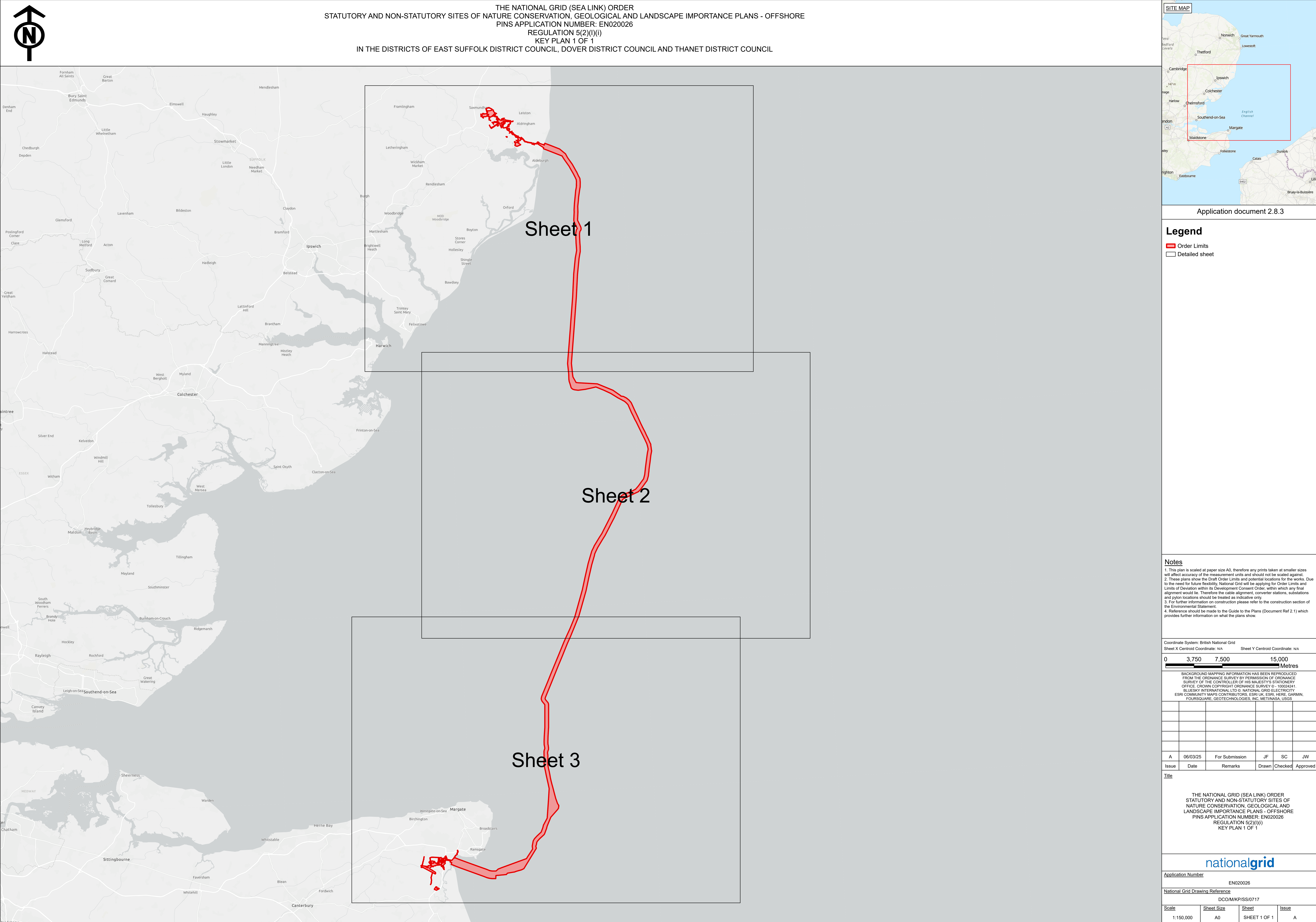
March 2025

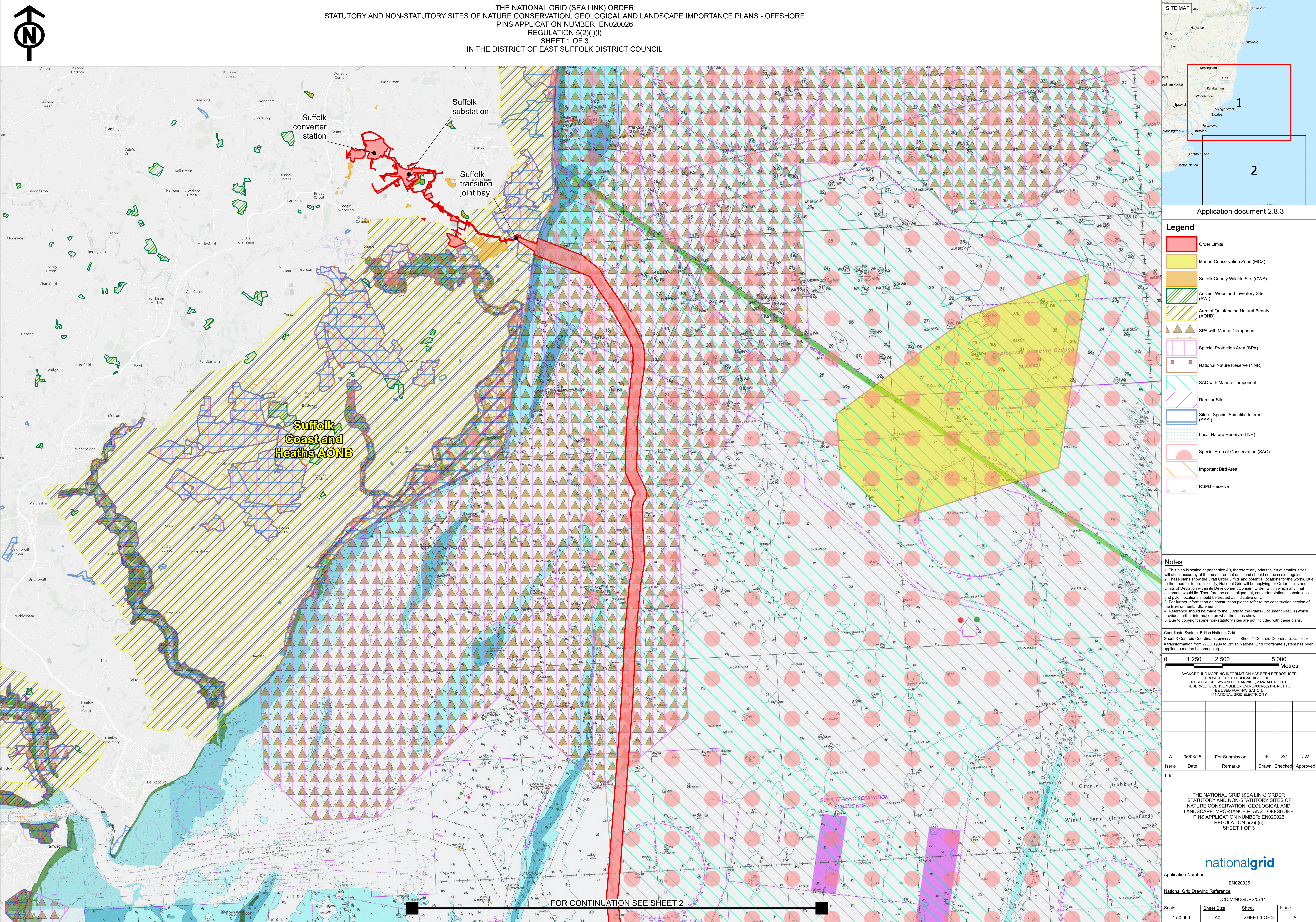
Infrastructure Planning (Applications: Prescribed Forms and Procedure)

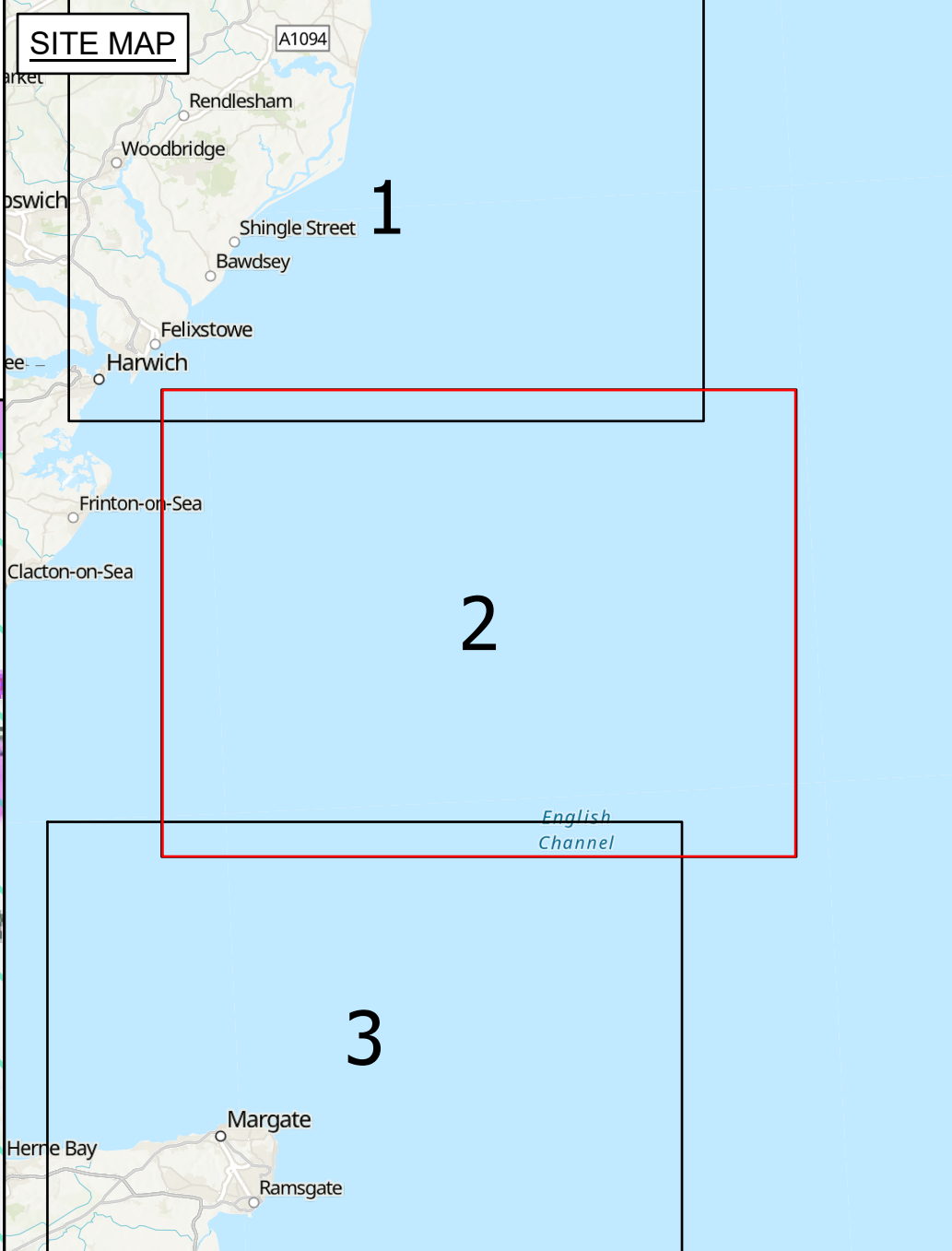
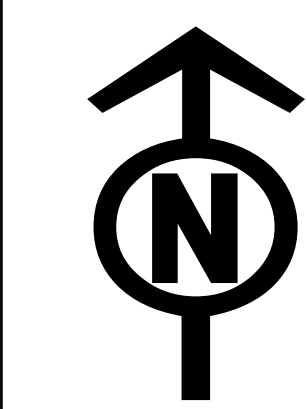
Regulations 2009 Regulation 5(2)(I)

nationalgrid

Page intentionally left blank







Application document 2.8.3

Legend

- Order Limits
- Marine Conservation Zone (MCZ)
- SPA with Marine Component
- Special Protection Area (SPA)
- SAC with Marine Component
- Special Area of Conservation (SAC)

Notes

1. This plan is scaled at paper size A0, therefore any prints taken at smaller sizes will affect accuracy of the measurement units and should not be scaled against.

2. These plans show the Draft Order Limits and potential locations for the works. Due to the need for future flexibility, National Grid will be applying for Order Limits and Limits of Deviation within its Development Consent Order, within which any final alignment would lie. Therefore the cable alignment, converter stations, substations and pylon locations should be treated as indicative only.

3. For further information on construction please refer to the construction section of the Environmental Statement.

4. Reference should be made to the Guide to the Plans (Document Ref 2.1) which provides further information on what the plans show.

5. Due to copyright some non-statutory sites are not included with these plans.

Coordinate System: British National Grid
Sheet X Centroid Coordinate: 65616.31 Sheet Y Centroid Coordinate: 211918.8
A transformation from WGS 1984 to British National Grid coordinate system has been applied to marine basemapping.

0 1,250 2,500 5,000
Metres

BACKGROUND MAPPING INFORMATION HAS BEEN REPRODUCED FROM THE UK HYDROGRAPHIC OFFICE
© BRITISH CROWN AND OCEANWISE, 2024. ALL RIGHTS RESERVED. LICENSE NUMBER EMS-E001-882114. NOT TO BE USED FOR NAVIGATION
© NATIONAL GRID ELECTRICITY

Issue	Date	Remarks	Drawn	Checked	Approved
A	06/03/25	For Submission	JF	SC	JW

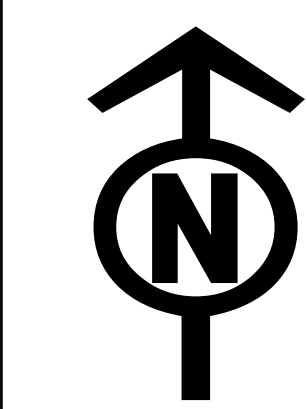
THE NATIONAL GRID (SEA LINK) ORDER
STATUTORY AND NON-STATUTORY SITES OF
NATURE CONSERVATION, GEOLOGICAL AND
LANDSCAPE IMPORTANCE PLANS - OFFSHORE
PINS APPLICATION NUMBER: EN020026
REGULATION 5(2)(l)(i)
SHEET 2 OF 3

nationalgrid

Application Number: EN020026

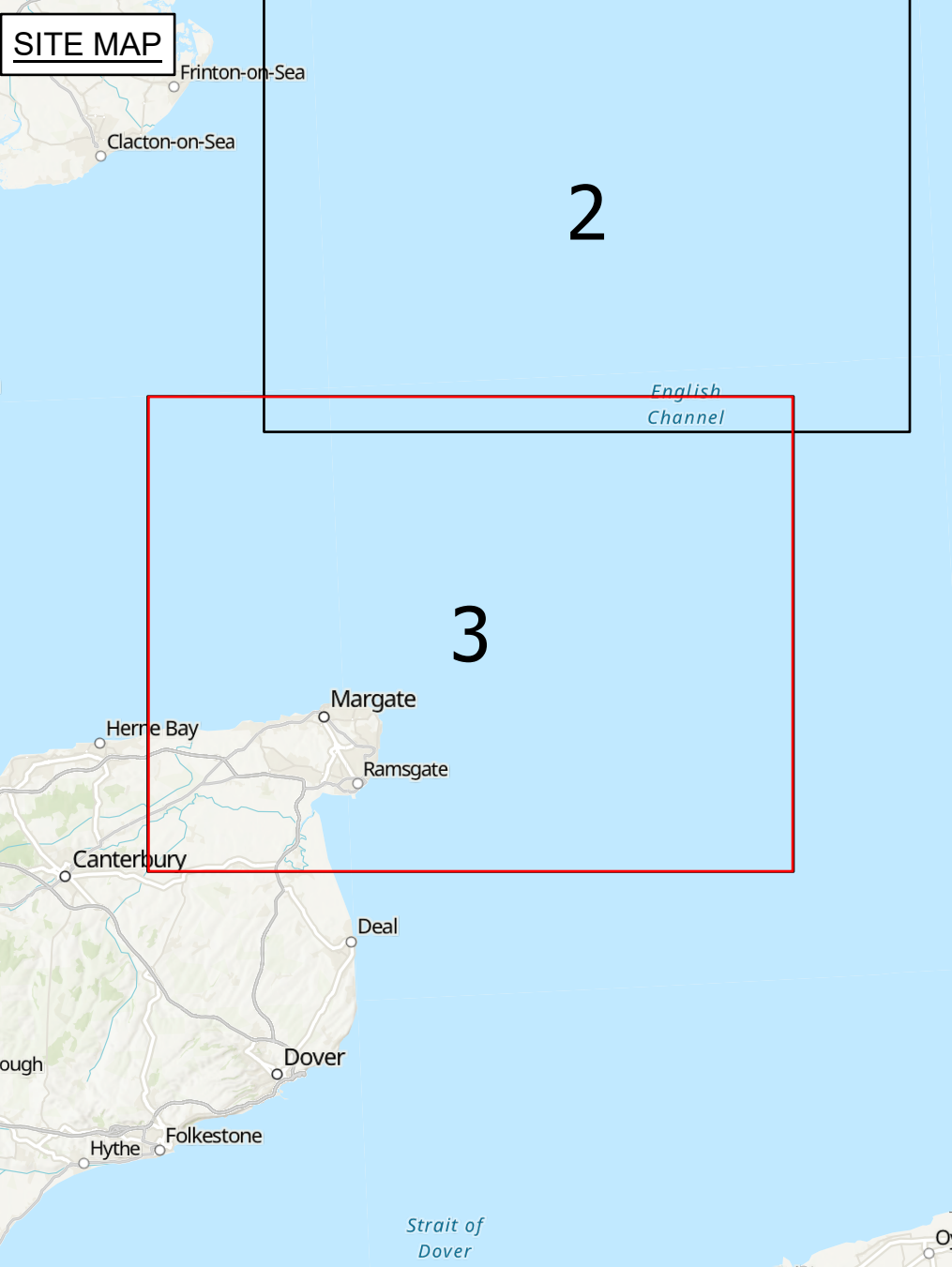
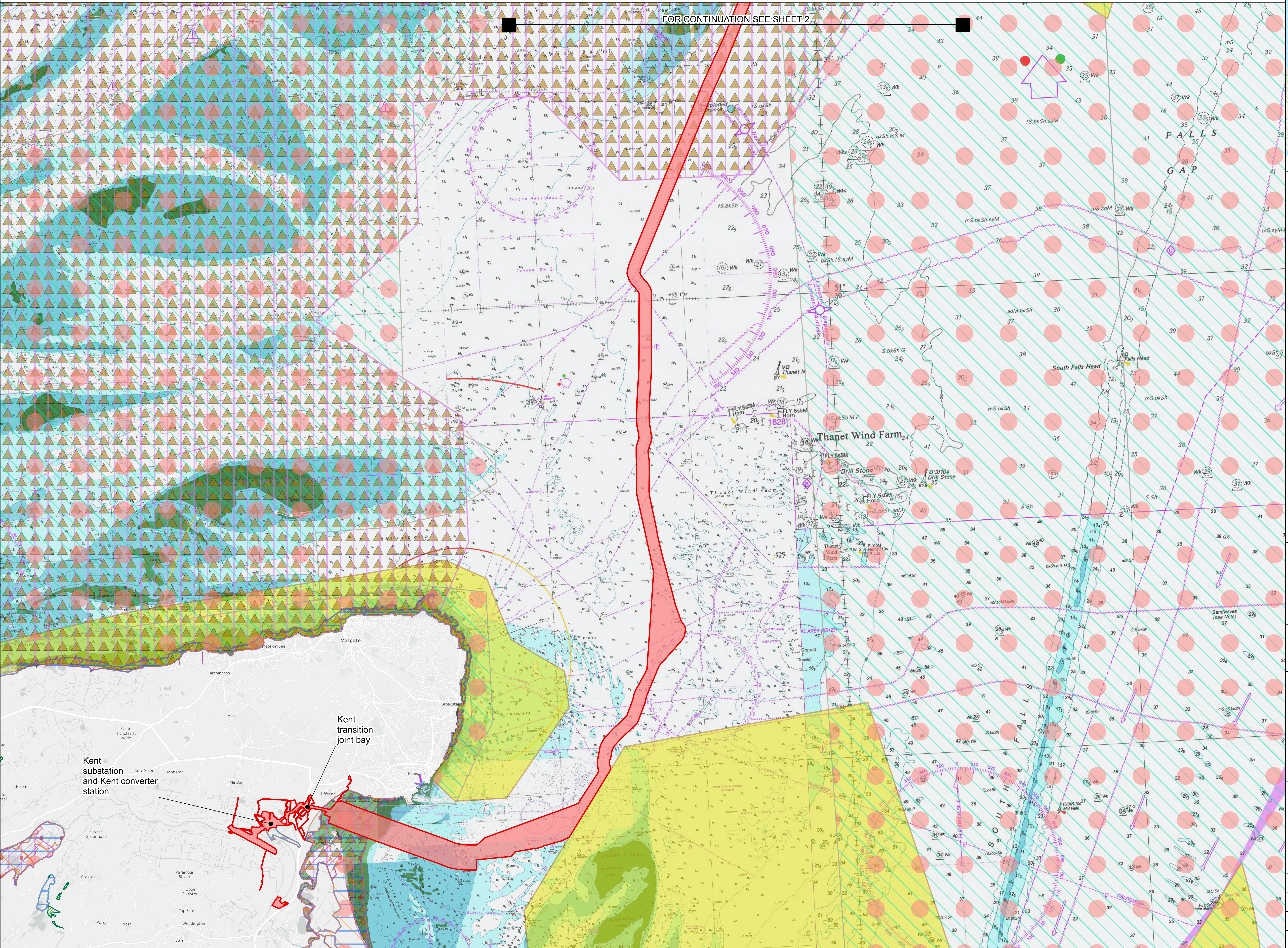
National Grid Drawing Reference: DCOM/INCL/PS/0715

Scale	Sheet Size	Sheet	Issue
1:50,000	A0	SHEET 2 OF 3	A



THE NATIONAL GRID (SEA LINK) ORDER
STATUTORY AND NON-STATUTORY SITES OF NATURE CONSERVATION, GEOLOGICAL AND LANDSCAPE IMPORTANCE PLANS - OFFSHORE
PINS APPLICATION NUMBER: EN020026
REGULATION 5(2)(I)(I)
SHEET 3 OF 3
IN THE DISTRICTS OF DOVER DISTRICT COUNCIL AND THANET DISTRICT COUNCIL

FOR CONTINUATION SEE SHEET 2



Application document 2.8.3

Legend

- Order Limits
- Marine Conservation Zone (MCZ)
- Ancient Woodland Inventory Site (AWI)
- SPA with Marine Component
- Special Protection Area (SPA)
- National Nature Reserve (NNR)
- SAC with Marine Component
- Ramsar Site
- Site of Special Scientific Interest (SSSI)
- Local Nature Reserve (LNR)
- Special Area of Conservation (SAC)
- Important Bird Area

Notes

1. This plan is scaled at paper size A0, therefore any prints taken at smaller sizes will affect accuracy of the measurement units and should not be scaled against.

2. These plans show the Draft Order Limits and potential locations for the works. Due to the need for future flexibility, National Grid will be applying for Order Limits and Limits of Deviation within its Development Consent Order, within which any final alignment would lie. Therefore the cable alignment, converter stations, substations and pylon locations should be treated as indicative only.

3. For further information on construction please refer to the construction section of the Environmental Statement.

4. Reference should be made to the Guide to the Plans (Document Ref 2.1) which provides further information on what the plans show.

5. Due to copyright some non-statutory sites are not included with these plans.

Coordinate System: British National Grid
Sheet X Centroid Coordinate: 647163.31 Sheet Y Centroid Coordinate: 176934.84
A transformation from WGS 1984 to British National Grid coordinate system has been applied to marine basemapping.

0 1,250 2,500 5,000 Metres

BACKGROUND MAPPING INFORMATION HAS BEEN REPRODUCED FROM THE UK HYDROGRAPHIC OFFICE
© BRITISH CROWN AND OCEANWISE, 2024. ALL RIGHTS RESERVED. LICENSE NUMBER EMS-EX01-882114. NOT TO BE USED FOR NAVIGATION
© NATIONAL GRID ELECTRICITY

A	06/03/25	For Submission	JF	SC	JW
Issue	Date	Remarks	Drawn	Checked	Approved

THE NATIONAL GRID (SEA LINK) ORDER
STATUTORY AND NON-STATUTORY SITES OF
NATURE CONSERVATION, GEOLOGICAL AND
LANDSCAPE IMPORTANCE PLANS - OFFSHORE
PINS APPLICATION NUMBER: EN020026
REGULATION 5(2)(I)(I)
SHEET 3 OF 3

<div><div></div><div>nationalgrid</div></div>			
<u>Application Number</u>		EN020026	
<u>National Grid Drawing Reference</u>			
DCO/MNCG/LPS/0716			
<u>Scale</u>	<u>Sheet Size</u>	<u>Sheet</u>	<u>Issue</u>
1:50,000	A0	SHEET 3 OF 3	A